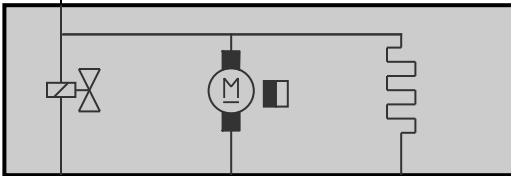


7 X11002

U_HR<17
0.75
RT/WS

4 X1714



3

S_DMTLV
0.5
SW/GN

1

S_DMTLP
0.75
BR/BL

2

X1714
S_DMTLH
0.75
SW/RT

9

8

7

X6041

12

S_DMTLV
0.75
WS/BR

11

S_DMTLP
0.75
WS/VI

10

X60551
S_DMTLH
0.75
WS/SW

15

16

17

X60002

