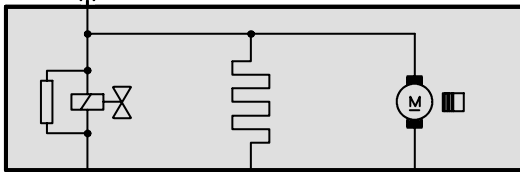


13 X6011

KL.87  
0.75  
RT/WS

4 X1714



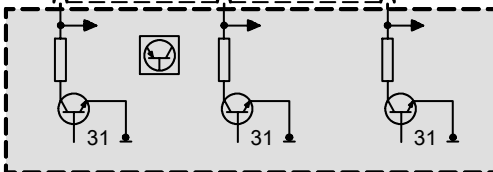
3 2 1 X1714

S\_DMTLV  
0.5  
BR/BL

S\_DMTLH  
0.5  
GR

S\_DMTLP  
0.35  
SW/GN

30 2 20 X60104



A6010  
Engine control mod-  
ule I (DME)