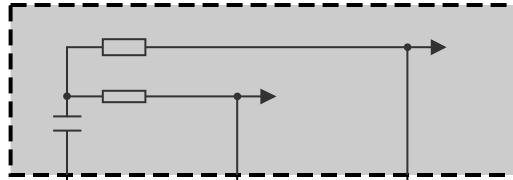


**Z44**  
Front right power distribution box



**R6**  
CAN terminator 6

**30B<72**  
0.5  
RT/WS

**31**  
0.5  
BR  
**Z10\*16B**

**PT\_CAN2L**  
0.35  
WS/BL

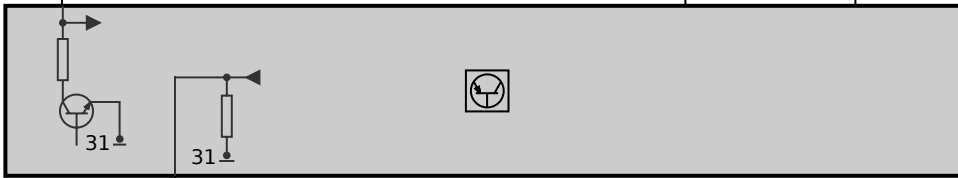
**PT\_CAN2H**  
0.35  
WS/GE

**R6\*1B**

10

3

4 **S45\*1B**



**S45**  
Gear selector switch

8 **S45\*1B**

**31**  
0.75  
BR

**Z10\*40B**