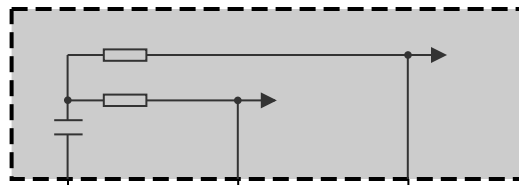


Z44  
Front right power distribution box



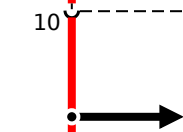
R6  
CAN terminator 6

30B<51  
2.5  
RT/GN

31  
0.5  
BR  
Z10\*47B

PT\_CAN2H  
0.35  
WS/GE

PT\_CAN2L  
0.35  
WS/BL



30B<51  
2.5

PT\_CAN2H  
0.35

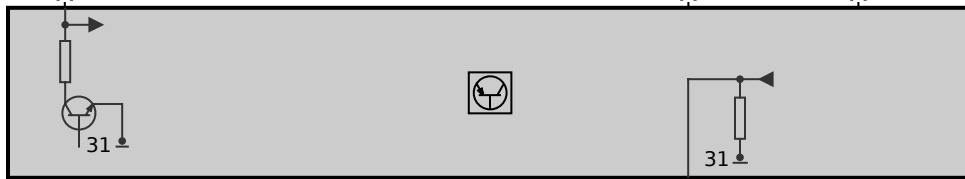
PT\_CAN2L  
0.35

	RT		WS		GE/VI	N63 engine
	RT		SW		GE	B58 engine
	RT		SW/GE		GE	B57 engine
	RT/GN		SW/WS		GE	B48 engine

13

5

6 Y21\*1B



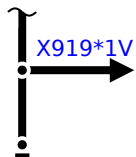
Y21  
Electronic transmission control

14 Y21\*1B

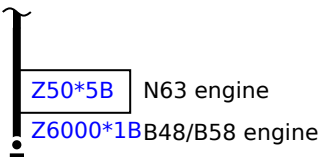
31  
2.5  
BR

Diesel

Petrol engine



X919\*1V



Z50\*5B N63 engine  
Z6000\*1B B48/B58 engine