

1 X14*1B

30B<64
0.35
RT

30B<64
0.35
RT

3 S157*1B



1

2

4 S157*1B

31
0.75
BR

LORD_AD4
0.35
WS/GE
BL/WS

LORD_GND
0.35
BR/OR

X641*1V

without electric seat adjustment

A245
Driver's seat module



7

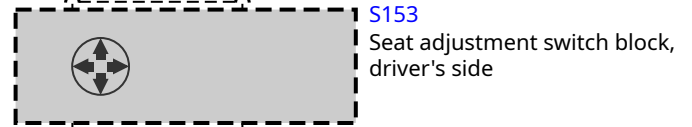
6

VERS
0.35
RT

GND
0.35
BR

5

3 S153*3B



1

2

LORD_AD4
0.35
WS/GE

LORD_GND
0.35
BR/OR

5

3

with electric seat adjustment

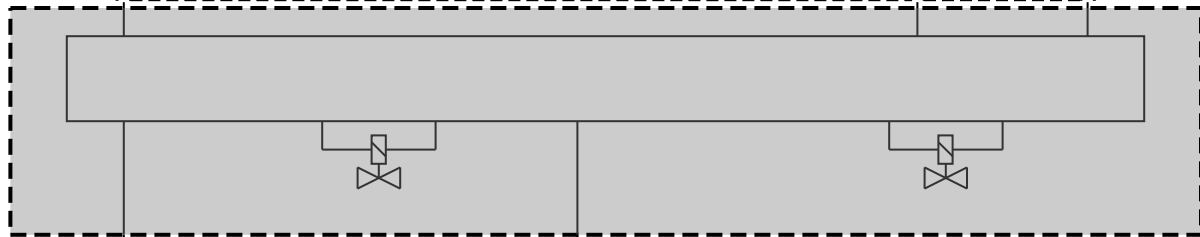
1

5

6

Y251*1B

Y251
Valve block for lumbar support/
backrest width adjustment,
driver



2

3 Y251*1B

31
0.75
BR

PNEU_FA
0.35
WS/RT

1 M219*1B

M219
Pneumatic pump, driver's seat

2 M219*1B

31
0.75
BR

X641*1V

X641*1V

