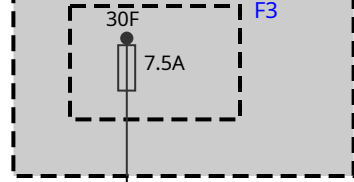
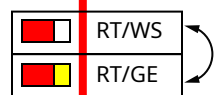


A528
Basic central platform (BCP)

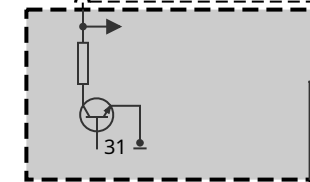


46 A528*3B

30F<3
0.35



5

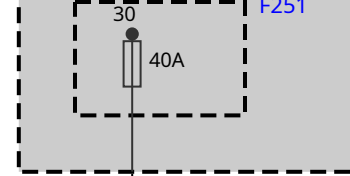


8 A218*1B

31
4.0
BR

Z10*12B

Z2
Power distribution box, rear

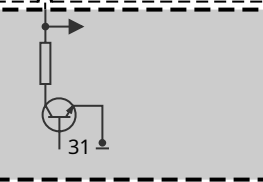


5 Z2*4B

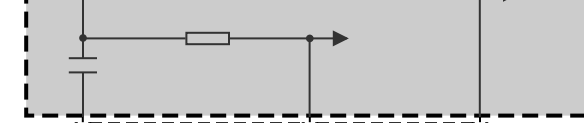
30<251
4.0

RT/VI

1



R2
CAN terminator



26

31
0.5
BR/SW

Z10*46B

8

K-CAN2_H
0.35
GE/BR

K-CAN2_L
0.35
GE/RT

3

A218*1B

2

A218
Tailgate function module (HKFM)